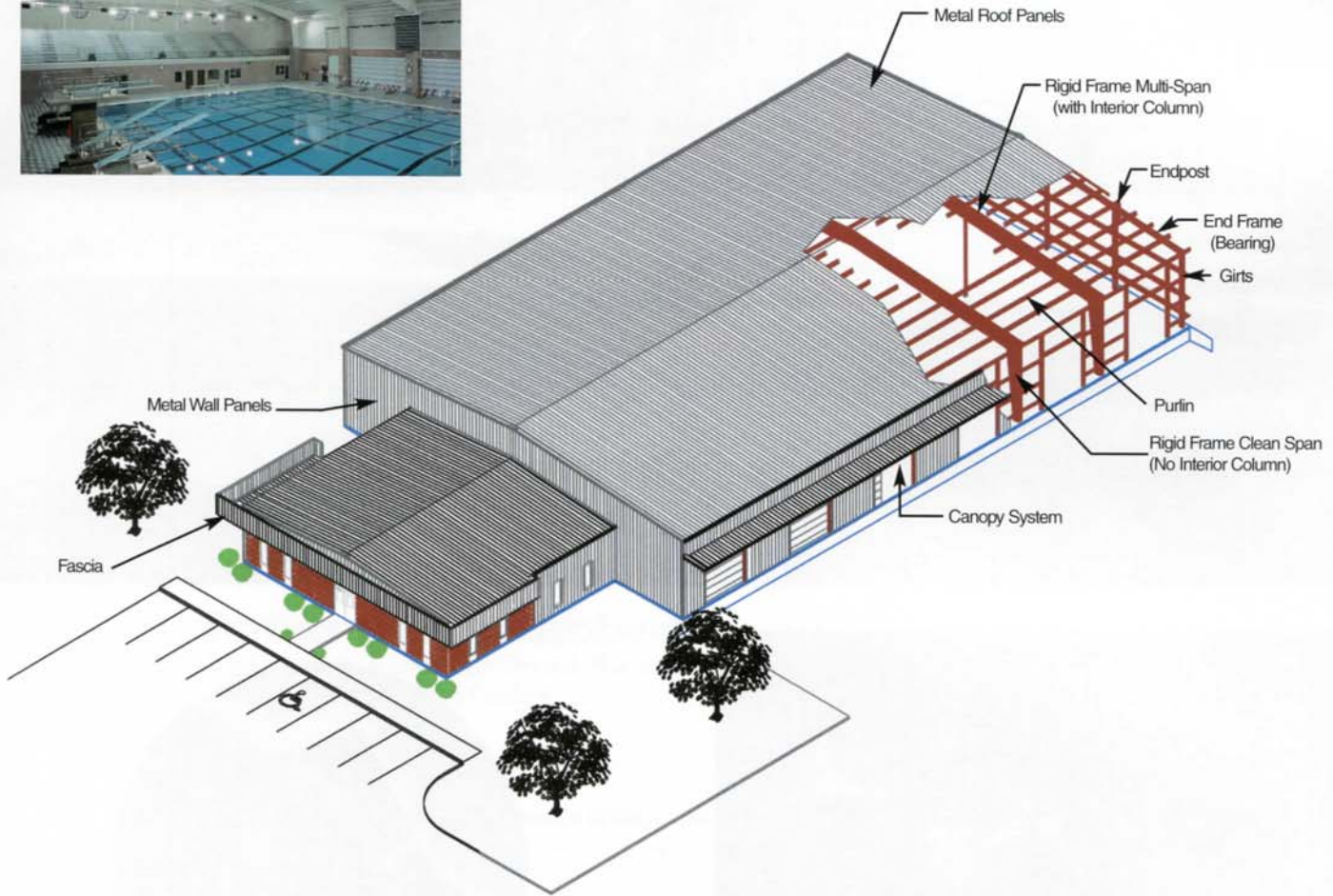


Rigid Frame Structural Systems



Rigid Frame Clear Span – 20' to 160' and wider building width, where column-free floor area is required

Rigid Frame Multi-Span – 50' to 500' and wider, where interior columns do not impair function of building

Flush Wall Clear Span – 20' to 70' where column-free floor area is required in conjunction with column contained within the girt space

Flush Wall Multi-Span – 50' to 250' where interior columns do not impair function of building in conjunction with columns contained within the girt space

Mezzanines and Multistory – structural systems available



Single-Slope Clear Span – 20' to 160' and wider, where column-free floor area and single-slope is required

Single-Slope Multi-Span – 50' to 500' where interior columns do not impair function of building and single-slope is required

Tapered Beam Straight Column – 15' to 70' used with short-span column-free interiors where maximum clearance is required

Lean-To – 10' to 60' an economical way to increase width of building

Modular Open Web – Multi-Span systems available with open web rafters